



Bulletin #1

2025 Subaru Puyallup Olympus Rally Presented by DirtFish

3/17/25

1. Shakedown Information

See attached pages 2,3

2. Updated Schedule:

Updated schedule see attached pages 4,5.

- Fixed miscellaneous mileages.
- Added regional totals.
- Removed remote refuel adding a short service between TC3 and TC4.

Matt Flaisig

Clerk of Course

Shakedown Stage Information

Shakedown Stage will be Thursday April 10, 2024. Competitor participation is voluntary. Shakedown is not open to the public. Driver and Co-Driver/passenger MUST wear safety equipment meeting requirements in RTR Section 1.

Entry is \$200 per car. Email rallystage@hotmail.com to sign up for a spot. Provide car number and requested Run Group.

(3) 2 hour run groups with a maximum of 10 cars per run group. Each run group will have a 30-minute recce window.

The stage is roughly 3.5 miles long, features some fast flowy sections, some tighter narrow parts W/ elevation changes and even a longer straight that will represent the Olympus stages well.

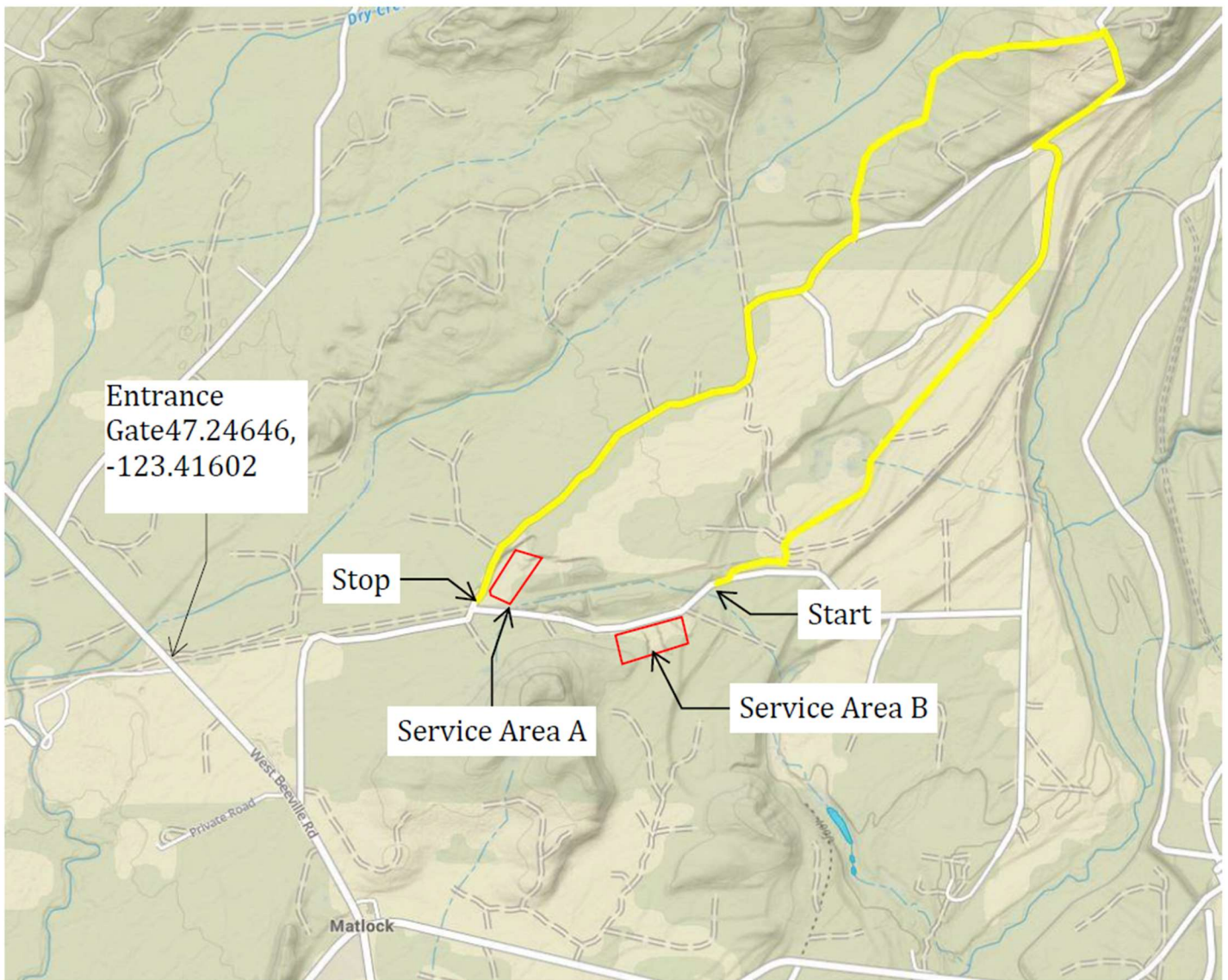
All media to be in place before course opening sweep. Media only to move locations during scheduled breaks. Stage stoppage for media will **not** be permitted during the stage hot times. This is to test and shakedown your car.

Please try to keep it on the road! We want to maximize the running time for everyone; **extra time will not be given to a run group due to an off and sweeping the stage.**

There will be two service areas. One area will be for group A and another for Group B, Group C will use group A's spot when they are done.

Schedule	
Time	Description
7:30	Group A Service area open
8:00-8:30	Group A Recce
8:30 – 8:45	Course opening Sweep
8:45-10:45	Group A Stage Hot
10:00	Group B Service area open
10:45-11:15	Sweep stage of any cars off
11:00-11:30	Group B Recce
11:30-11:45	Course opening Sweep
12:00	All Group A teams to be clear of service
11:45-13:45	Group B Stage Hot
13:45-14:15	Sweep stage of any cars off
13:00	Group C Service area open (All Group A teams to be clear of service by 12:30)
14:00-14:30	Group C Recce
14:30-14:45	Course opening Sweep
14:45-16:45	Group C Stage Hot
16:45-17:15	Sweep stage of any cars off
18:00	All teams to be out of service gate get locked.

Shakedown Stage Map



TOTALS OF 2025 OLYMPUS RALLY				
	SS	TRANSIT	TOTAL	%
Saturday (Section 1,2,3)	69.6	134.8	204.5	34%
Sunday (Sections 4, 5, 6)	56.7	59.7	116.4	49%
Regional Totals -- 11 SS	126.3	194.5	320.9	39%
National Totals -- 12 SS	132.8	213.0	345.8	38%

START (Sections 1,2,3,4) NATIONAL 2025 OLYMPUS RALLY Saturday April 12, 2025

TC	LOCATION	SS DIST	TRANSIT DIST	TOTAL DIST	LATENESS TIME	TRANSIT TIME	FIRST CAR DUE
	Parc Expose(Downtown Shelton)						8:00
0	MTC OUT (Downtown Shelton)						9:30
	distance to next refuel	(17.32)	(25.88)	(35.81)			
1			23.84	23.84		0:45	10:15
SS 1	Schafer	9.93			0:15		10:18
2			2.04	11.97		0:15	10:48
SS 2	Deckerville 43	7.39			0:11		10:51
2A	SERVICE IN		21.80	29.19		0:38	11:40
	SERVICE A (Sanderson)	17.32	47.68	65.00			
2C	SERVICE OUT					0:20	12:00
RZ	REFUEL						
1	Distance to next refuel	(17.32)	(45.41)	(62.73)			
3			21.57	21.57		0:45	12:25
SS 3	Schafer 2	9.93			0:15		12:28
4			2.04	11.97		0:15	12:58
SS 4	Deckerville 43 2	7.39			0:11		13:01
4A	REGROUPING IN		21.80	29.19		0:38	13:50
4B	REGROUPING OUT - SERVICE IN					0:15	14:05
	SERVICE B (Sanderson)	17.32	45.41	62.73			
4C	SERVICE OUT					0:30	14:35
RZ	REFUEL						
2	Distance to next refuel	(17.49)	(31.79)	(49.28)			
5			21.04	21.04		0:50	15:25
SS 5	Andy's Wildcat	17.49			0:30		15:28
5A	REGROUPING IN		10.75	28.24		0:24	16:22
5B	REGROUPING OUT - SERVICE IN					0:15	16:37
	SERVICE C (Sanderson)	(17.49)	(31.79)	(49.28)			
5C	SERVICE OUT					0:30	17:07
RZ	REFUEL						
3	Distance to next refuel	(17.49)	(31.75)	(49.24)			
6			21.00	21.00		0:50	17:57
SS 6	Andy's Wildcat 2	17.49			0:30		18:00
6A	MTC IN (Sanderson)		10.75	28.24		0:24	18:54
Saturday Totals		69.62	134.83	204.45			

TC	LOCATION	SS DIST	TRANSIT DIST	TOTAL DIST	LATENESS TIME	TRANSIT TIME	FIRST CAR DUE
	Parc Expose (Service)						8:00
6B	MTC OUT (Service)						9:00
	Distance to next refuel	(25.13)	(24.19)	(49.32)			
7			13.08	13.08		0:25	9:25
SS 7	The Stillwater	13.13			0:22		9:28
8			5.15	18.28		0:22	10:12
SS 8	Dayton	12.00			0:21		10:15
8A	REGROUPING IN		5.96	17.96		0:15	10:51
8B	REGROUPING OUT - SERVICE IN					0:15	11:06
	SERVICE D (Sanderson)	(25.13)	(24.19)	(49.32)			
8C	SERVICE OUT					0:30	11:36
RZ	REFUEL						
4	Distance to next refuel	(31.59)	(35.50)	(67.09)			
9			13.08	13.08		0:25	12:01
SS 9	The Stillwater 2	13.13			0:22		12:04
10			5.15	18.28		0:22	12:48
SS 10	Dayton 2	12.00			0:21		12:51
11			9.96	21.96		0:25	13:37
SS 11	PowerStage	6.46			0:10		13:40
11A	REGROUPING IN (Regional MTC)		7.31	13.77		0:20	14:10
11B	REGROUPING OUT - SERVICE IN					0:20	14:30
	SERVICE E (Sanderson)	(31.59)	(35.50)	(67.09)			
11C	SERVICE OUT					0:30	15:00
RZ	REFUEL						
5	Distance to next refuel	(6.46)	(18.47)	(24.93)			
12			11.16	11.16		0:25	15:25
SS12	National Powerstage	6.46			0:10		15:28
12A	MTC IN (Sanderson)		7.31	13.77		0:20	15:58

Section 4

Section 5

Section 6

Sunday Regional Totals	56.72	59.69	116.41
Sunday National Totals	63.18	78.16	141.34